

East Grand County Fire Protection District #4



District Report
(Through 2022)

Review of 2020 a YEAR of COVID and FIRES

COVID 19 - first appearing end of 2019 in the US, possibly in January. After the first known fatality, WP Resort shut down and the US locked down in March. Over 500,000 deaths 1 year later. Adapted and modified our responses and training. **Braidwood Condos Fatality Structure Fire** occurred in April. **Williams Fork Wildfire**, August. **East Troublesome Wildfire**, October. More COVID with spiking numbers, November. Amazing results with fast-tracking new ways of producing **vaccines**. First emergency approval and vaccines going into arms, December. EGFD Firefighters nearing 100% vaccination by March.

Braidwood-First fatality fire in the Fraser Valley/East Grand Fire District since at least the 1950's. Fire was contained to one end and top floor. After much effort the fatality was located and carefully removed from the building.



Williams Fork-Fire was a stalking tiger 8 to 10 miles west of EG HQ for over 2 months. Major mitigation and planning efforts from August 14 to blizzard on October 25. Fire never entered the District and we did not have a wildfire in the District but did have a number of unattended campfires.



East Troublesome-Fire started October 14, and worked its way across northern Grand County for a week until the 21st. That evening the Fire Districts of Grand County, all Law Agencies, and County EMS were handed what amounted to a brand new



East Troublesome Fire, THE BLOWUP, after it crossed over CO 125 and roared over the ridge to Lake Granby, Grand Lake, RMNP and on to Estes Park. Our Firefighters saw more fire that night and over the next 4 days around the clock than many Firefighters will see in a lifetime. When the "book" said that everyone should back off into safety zones and get the cameras out they did not. In 90

minutes, an evacuation was accomplished that should have taken most of a day, and done mostly in smoke and darkness. Crews pushed until they had to get out of the way of the flame front, let it go by, and then re-engaged and did flame front following. Located and rescued 2 loggers who had been burned over and saved many homes.





East Grand County Fire Protection District #4
Information Sheet as of December 31, 2022

East Grand County Fire Protection District #4
PO Box 2967 – 77601 US Highway 40
Winter Park Colorado 80482-2967
970 726 5824

www.eastgrandfire.com
www.facebook.com/EastGrandFire

Board of Directors

Mark Pappas – President
Garth Hein – Vice President
Rachel Hoyhtya – Treasurer
Rick Kramer – Secretary
Don Maurais- Member at Large

Pension Trustees

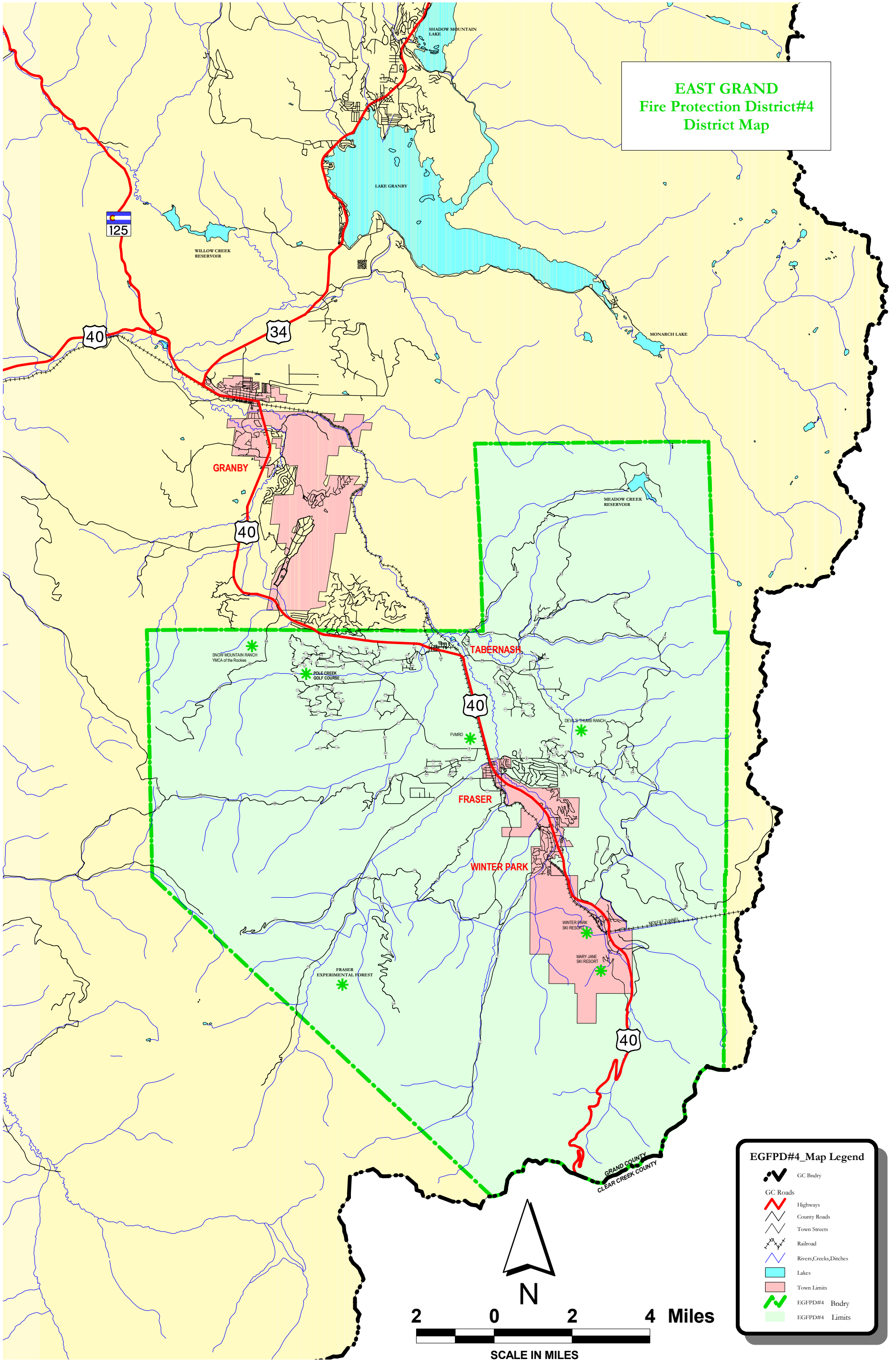
Brian Dolan – Pension Board
John Krueger – Pension Board

Office Staff

Jed Henry – Volunteer Coordinator
Todd Holzwarth – Fire Chief
Ryan Mowery – Asst. Fire Marshal
Kristen Rybij – Office Manager
Dennis Soles – Fire Marshal
Steve Waldorf – Training Coordinator

The contact person for the District is Todd Holzwarth. He can be reached at 970-726-5824. Please feel free to contact any of us with your questions or comment.

EAST GRAND
Fire Protection District#4
District Map



EGFPD#4_Map Legend

- GC Bndry
- GC Roads
- Highways
- County Roads
- Town Streets
- Railroad
- Rivers,Creeks,Ditches
- Lakes
- Town Limits
- EGFPD#4 Bndry
- EGFPD#4 Limits



East Grand Fire Facts

East Grand County Fire Protection District # 4 is a Fire Protection Special District organized under Title 32 of the Colorado Revised Statutes funded by property tax dollars. The governing body of the East Grand Fire District consists of a Board of 5 Directors elected by the District's registered Voters and property owners. The President of the Board is Mark Pappas, Vice President – Garth Hein, Secretary - Rick Kramer, Treasurer – Rachel

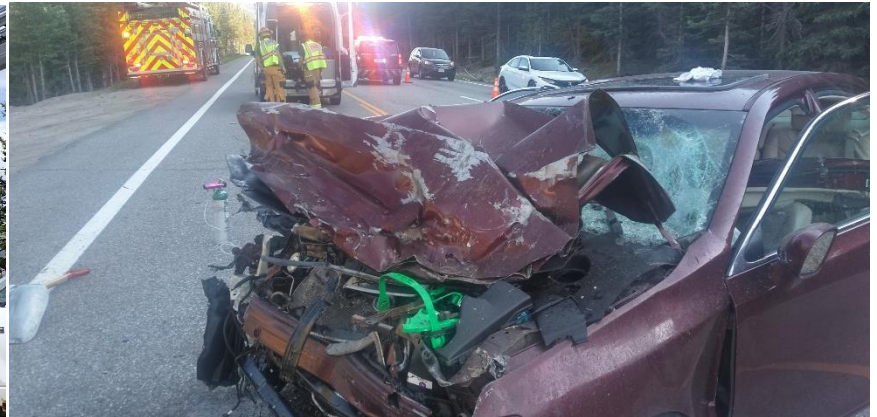
Hoyhtya and Member at Large – Don Maurais. The Board employs Jed Henry – Volunteer Coordinator, Todd Holzwarth - Fire Chief, Ryan Mowrey – Asst. Fire Marshal, Kristen Rybji - Office Manager and Administrative Assistant, Dennis Soles - Fire Marshal, and Steve Waldorf - Training Coordinator.



And we can never forget to thank the outstanding 33 Volunteer Firefighters and Officers who are the heart of the District!

A unique aspect of East Grand Fire is our Resident Program. We have living quarters at our Headquarters, Tabernash and Red Dirt Stations. Resident Volunteer Firefighters can reside at any of the Stations. Resident Firefighters maintain fire apparatus and buildings as well as respond to incidents in exchange for housing.

In 2022 we responded to 412 incidents involving a total of 5,019 Firefighter hours. This included providing Automatic and Mutual Aid responses to surrounding Fire Districts and other public safety agencies. East Grand Firefighters also logged 4,954 hours of training.



Our Trucks:



Tender 461



Tender 463



FEPP Engine 464



Tender 465



Wildfire Engine/Utility 472



Wildfire Engine 471



Utility 475

and Bob

Ladder Tower 491



Engine 481



Rescue Engine 482



Rescue Engine 483



Support Services 492



Staff cars 476 & 477



Engine 488



FIRE INSURANCE PROTECTION RATINGS



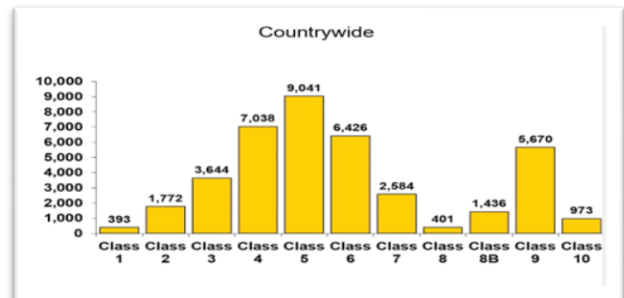
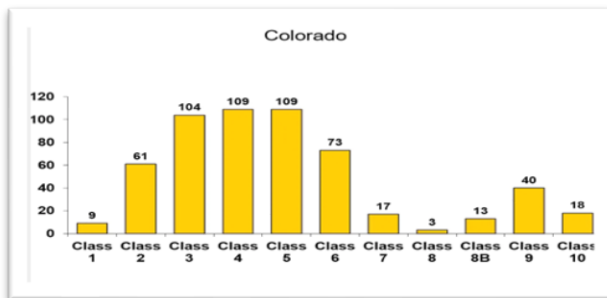
East Grand County Fire Protection District #4 Insurance Services Office (ISO) Fire Protection Class Ratings are Class 3 in hydrant areas and Class 4 in rural areas without fixed water supplies. The previous ratings were Class 4 and Class 6 respectively.



The Protection Class Ratings may provide savings on your property insurance depending on your property and your insurance company. Contact your insurance agent to get more information.

The Fire District was last evaluated by the ISO in the fall of 2016. ISO is a private company that provides information to the insurance industry that includes rating fire protection capabilities of fire service agencies throughout the US. The ISO grades fire protection on a scale of 1 (the most credit) to 10 (not meeting minimums).

The Class 3 rating applies to properties within 5 miles of our Stations and within 1000 ft. of a creditable water supply. Class 3 applies to the Towns of Winter Park, Fraser, and subdivisions with water supplies. The Class 4 rating applies to rural areas using a water shuttle system (Fire Department Developed Supply) but still within 5



miles. Class 10 is applied to areas beyond the 5 miles. The accompanying charts indicate the distribution of ISO Class ratings for Fire Districts and Departments in Colorado and nationwide. A Class 3 rating places us in the top 10% of departments nationally.

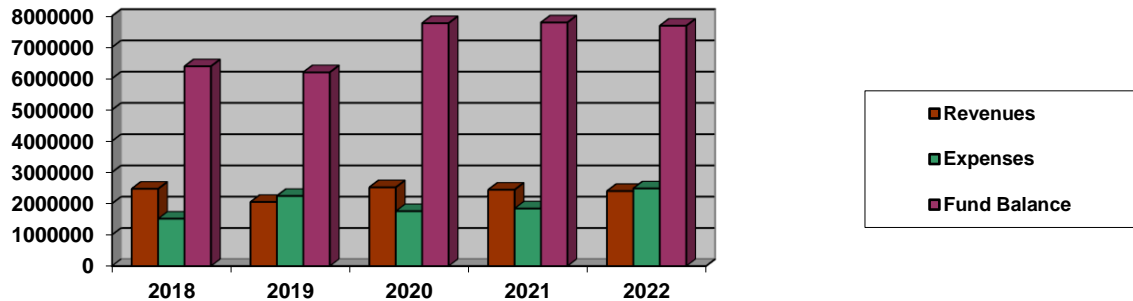
ISO uses a Fire Suppression Rating Schedule (FSRS) to give communities points in 3 areas. Emergency communications, such as the 911 system (10 percent), fire department procedures (50 percent) and water supply (40 percent). The results are analyzed by ISO and by insurance companies.

If you would like to find out even more about ISO Ratings and how they can affect your community and home contact our Office or go to: <https://www.isomitigation.com/program-works/how-the-ppc-program-works.html> or <https://www.isomitigation.com/>



Financial Information 2018 to 2022

General Fund Revenues/Expense Summary and Fund Balance



Our Revenues, Expenses, and ending Fund Balances are illustrated above. Below are capital projects by year.

2022 had activity ramping up to build the South Station following a multiyear effort. Final design over the winter, with awarding a contract and construction to begin Spring of 2023. Foundation design, and deep utility design work was completed prior to winter 2022/23. Replaced 15-year-old Self Contained Breathing units with 40 new MSA S-1's.

2021 saw the completion of asphalt and concrete replacement at Station 2 in Tabernash, the transferring property at Winter Park Resort from the Town of WP - planning and soil studies for the new South Station



For 2020 a new purpose-built Type 6 Wildfire Engine arrived and promptly went to work on the Williams Fork Fire. Station 2 saw major asphalt and concrete work begin with more planned. Planning and grant requests for updating Support 492 with connectivity and credentialing was initiated.



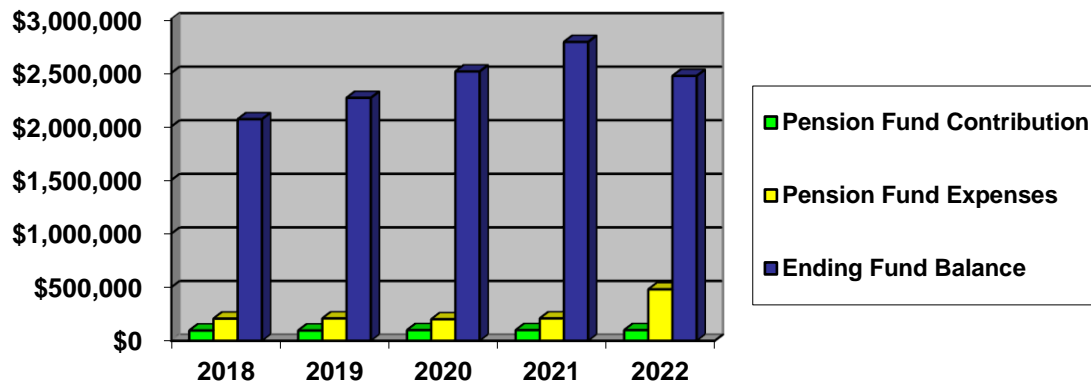
2019 was a busy year with the 2 to 1 approval by Voters of a Revenue Stabilization Ballot Question and the delivery of a new Type 1 Engine 481. The Ballot Measure provides for a steady revenue stream into the future.

2018 saw major asphalt and concrete replacement at our Headquarters Station, lighting improvements, a replacement duty vehicle that also supports traffic control on emergency scenes and a down payment for the replacement Engine delivered in 2019.

We have been very fortunate since 2003 which was a milestone year that saw the final payment on a 20-year, \$2.3 Million Bond and the Voter approved transfer of that revenue stream to Operations.



Pension Fund Contribution/Expense Summary and Fund Balance 2018/2022



The District contributes \$100,000 a year, which includes State Matching funds of \$36,000, to fund the Volunteer Firefighter Pension. 2022 Total Expenses (including unrealized losses) were \$480,809. The Fund has \$2,472,281 in assets at the end of 2022 which are managed by the Fire and Police Pension Association of Colorado (FPPA). We have 34 Pensioners and Survivor Pensioners.



Chaplain Don Thompson 1953-2019

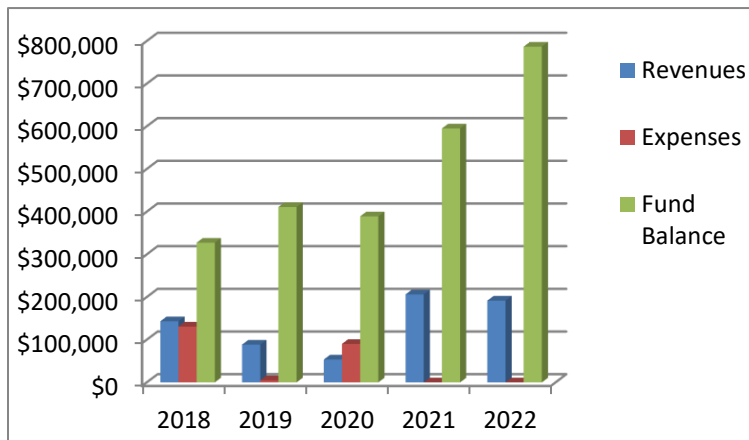


THEN-
"Circa 1975"

NOW!



Impact Fee Summary 2018 to 2022



The District began collecting Impact Fees in 2001 charging \$254 per Single Family Residence (SFR) or Commercial equivalent. The Impact Fund can only be used to purchase additional Fire Apparatus and equipment and assist in building our planned South Fire Station. At the end of 2022 our Fund Balance was \$786,698 in anticipation of building the new South Station.

Following a Nexus Study and reapproval by the Towns of Fraser, Winter Park, and Grand County we increased the Fee to \$454 in June of 2005. In 2014 we completed the newest Nexus Study as part of the process to continue our Impact Fee Program. The study recommended a small increase in our fee to \$483 per SFR; which was approved. In 2019 an updated new study was undertaken but due to issues including COVID 19 the request to change the fee was withdrawn and the Impact Fee remained unchanged.

For 2020 fees helped purchase a new Wildfire Engine. In 2019 we accepted delivery of the new Engine 481 replacing a 16-year-old unit. In 2018 the Fund provided the down payment for that Engine. In 2015/2016 Impact fees helped to purchase Rescue Engine 482 that replaced a 15-year-old engine and a new Bobcat loader to assist with snow removal and projects around the Fire Stations.

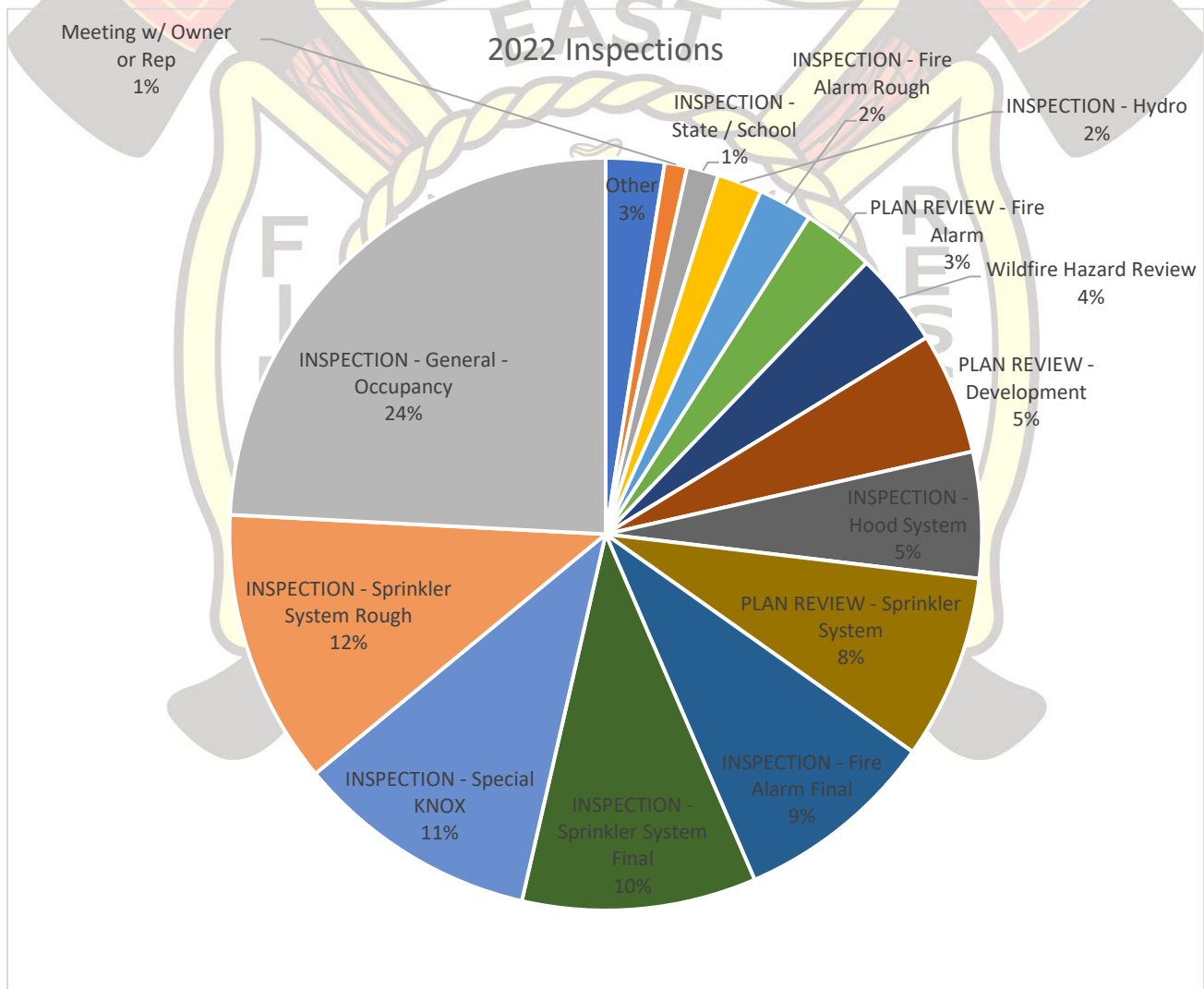


EAST GRAND FIRE PROTECTION DISTRICT NO. 4

P.O. Box 2967 • Winter Park, Colorado 80482
(970) 726-5824 • Fax (970)726-5938 • www.eastgrandfire.com

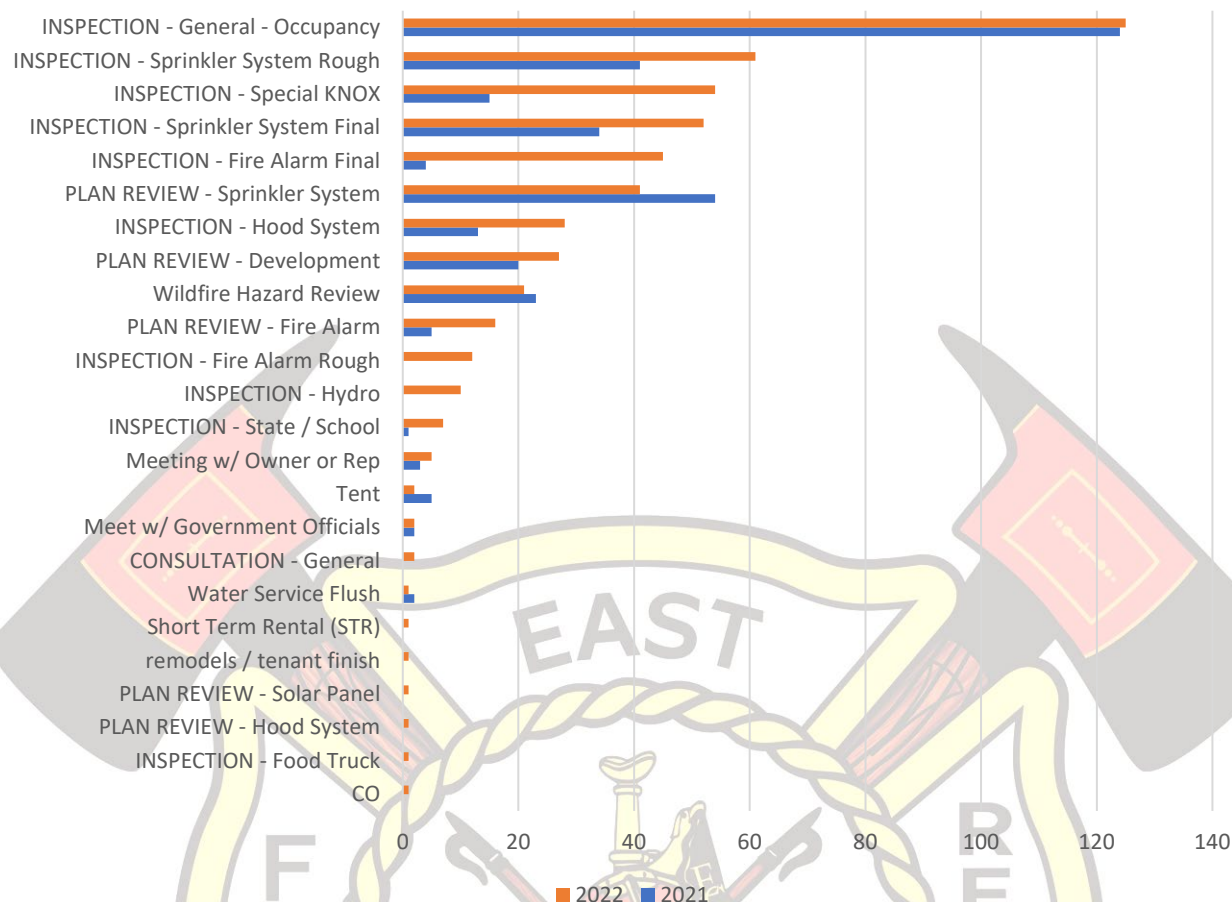
In 2022 the East Grand Fire Prevention Bureau conducted 517 Inspection / Review activities (Recorded in ESO) this number is up 171 additional activities from 2021 (346 activities in 2021). EGFD showed a 49% increase in inspection related activities, while there was most certainly an increase of actual activities, the actual number was slightly lower due to the fact of how different activities are entered compared to 2021. As we continue to learn the capabilities of ESO we are fine tuning data entry. An example of this would be in the past a “GENERAL” inspection of a restaurant in a commercial center with a Knox Box would only be entered as a GENERAL Occupancy Inspection, however in mid 2022 that inspection would be broken down in to the “General Inspection” of the building and related systems/life safety, Checking and updating Knox Keys “Knox Inspection”, and a sperate “Hood Inspection” as a building system.

Also in 2022 several different “inspection types” were added and reflect “0” for 2021. These additional inspection types were created to further refine data in the future.



Above figure represents a breakdown of inspections by Type completed in 2022.

Inspections 2021 vs 2022



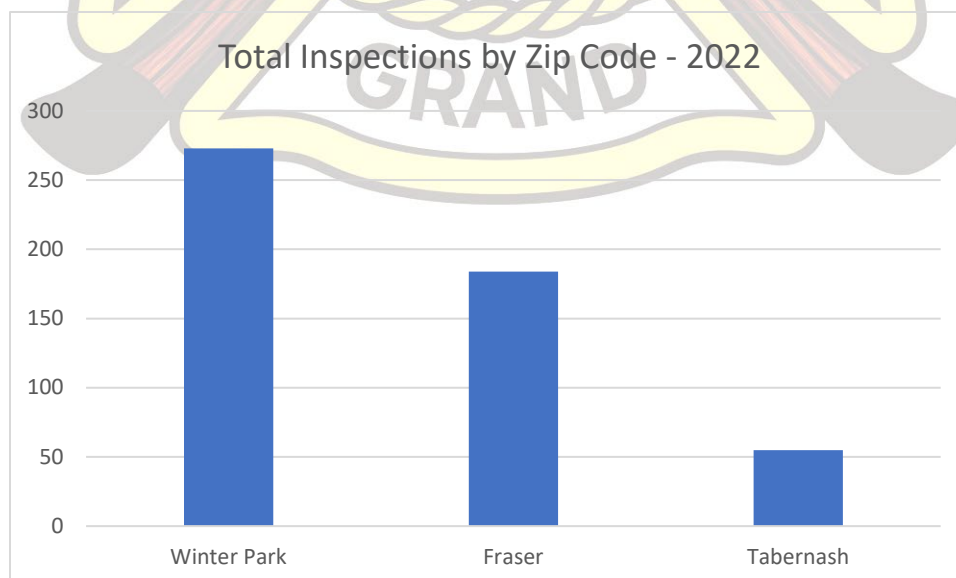
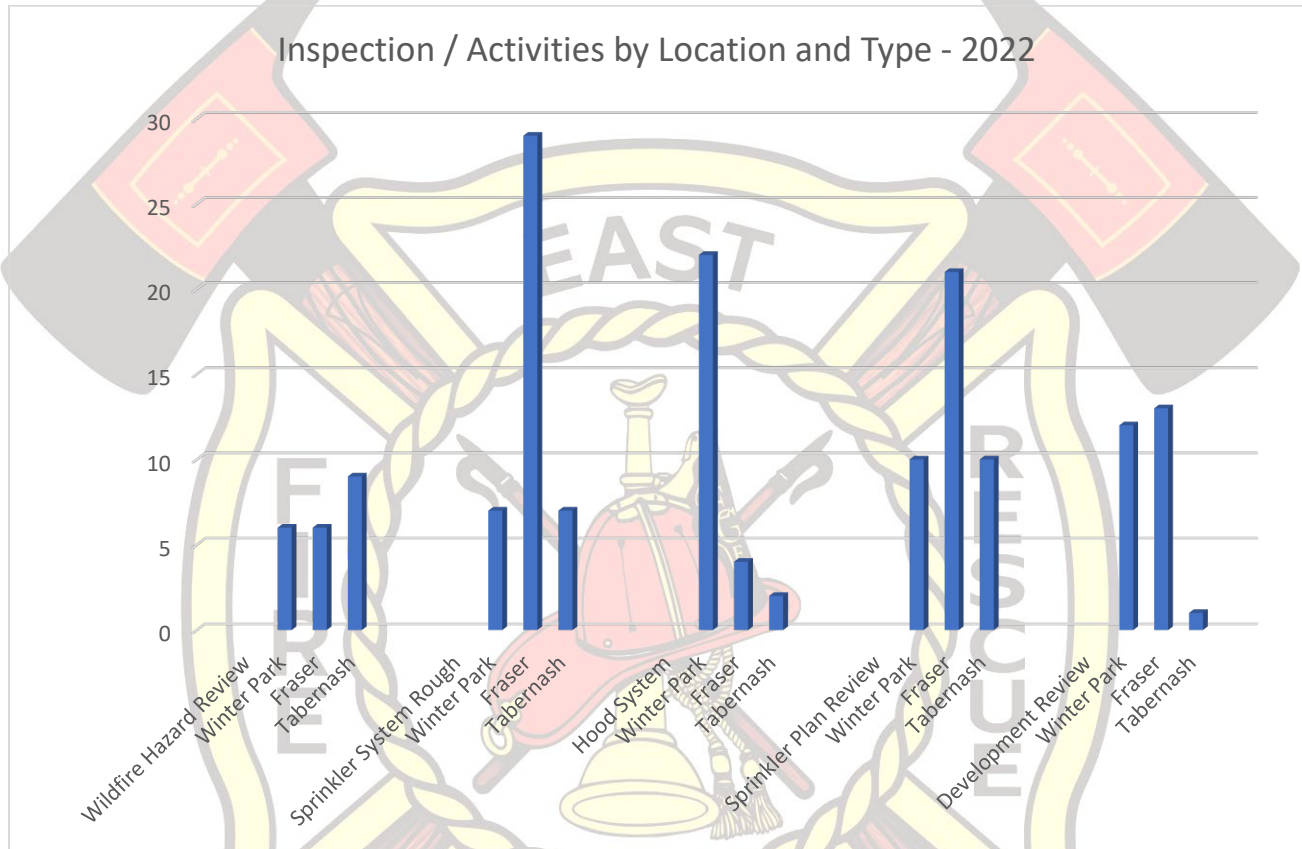
Above figure compares inspection types with year completed.

Note: Sprinkler Rough inspections are typically more than finals due to the fact of reinspection or partial inspections.

Note: Fire Alarm Rough inspections are only typically conducted on larger condo/commercial style buildings.

| Inspection Type | 2021 | 2022 | % Change |
|-------------------------------|------|------|----------|
| CO | 0 | 1 | |
| INSPECTION - Food Truck** | 0 | 1 | |
| PLAN REVIEW - Hood System | 0 | 1 | |
| PLAN REVIEW - Solar Panel** | 0 | 1 | |
| remodels / tenant finish | 0 | 1 | |
| Short Term Rental (STR)** | 0 | 1 | |
| Water Service Flush | 2 | 1 | -50% |
| CONSULTATION - General | 0 | 2 | |
| Meet w/ Government Officials | 2 | 2 | 0% |
| Tent | 5 | 2 | -60% |
| Meeting w/ Owner or Rep | 3 | 5 | 67% |
| INSPECTION - State / School | 1 | 7 | 600% |
| INSPECTION - Hydro** | 0 | 10 | |
| INSPECTION - Fire Alarm Rough | 0 | 12 | |
| PLAN REVIEW - Fire Alarm | 5 | 16 | 220% |
| Wildfire Hazard Review | 23 | 21 | -9% |
| PLAN REVIEW - Development | 20 | 27 | 35% |

| | | | |
|-------------------------------------|------------|------------|------------|
| INSPECTION - Hood System | 13 | 28 | 115% |
| PLAN REVIEW - Sprinkler System | 54 | 41 | -24% |
| INSPECTION - Fire Alarm Final | 4 | 45 | 1025% |
| INSPECTION - Sprinkler System Final | 34 | 52 | 53% |
| INSPECTION - Special KNOX | 15 | 54 | 260% |
| INSPECTION - Sprinkler System Rough | 41 | 61 | 49% |
| INSPECTION - General - Occupancy | 124 | 125 | 1% |
| **New Inspection Types** | | | |
| Total | 346 | 517 | 49% |



Inspections By Type - 2022

| Inspection Type | Number Or Milepost | Street Name | Street Type | Zip |
|--------------------------------------|--------------------|--------------|-------------|-------|
| CO | | | | |
| | 81699 | US 40 | HWY | 80482 |
| | 1 | | | |
| CONSULTATION - General | | | | |
| | 40 | GCR 804 | | 80442 |
| | 1 | | | |
| CONSULTATION - Site | | | | |
| | 789 | Ridge Point | | 80442 |
| | 1 | | | |
| INSPECTION - Fire Alarm Final | | | | |
| | 1008 | Winter Park | DR | 80482 |
| | 144 | Ski Idlewild | RD | 80482 |
| | 321 | North Woods | PL | 80482 |
| | 105 | GCR 5142 | | 80478 |
| | 122 | Hay Meadow | DR | 80442 |
| | 118 | Hay Meadow | DR | 80442 |
| | 1008 | Winter Park | DR | 80482 |
| | 1008 | Winter Park | DR | 80482 |
| | 101 | GCR 5142 | | 80478 |
| | 114 | Hay Meadow | DR | 80442 |
| | 108 | Hay Meadow | DR | 80442 |
| | 251 | Diamond | AVE | 80446 |
| | 90 | Hay Meadow | DR | 80442 |
| | 86 | Hay Meadow | DR | 80442 |
| | 80 | Hay Meadow | DR | 80442 |
| | 901 | GCR 5142 | | 80478 |
| | 96 | Hay Meadow | DR | 80442 |
| | 377 | Lions Gate | DR | 80482 |
| | 103 | GCR 5142 | | 80478 |
| | 144 | Ski Idlewild | RD | 80482 |
| | 144 | Ski Idlewild | RD | 80482 |
| | 64 | Hay Meadow | DR | 80442 |
| | 54 | Hay Meadow | DR | 80442 |
| | 30 | Hay Meadow | DR | 80442 |
| | 66 | Hay Meadow | DR | 80442 |
| | 62 | Hay Meadow | DR | 80442 |
| | 1101 | GCR 53 | | 80478 |
| | 38 | Hay Meadow | DR | 80442 |
| | 42 | Hay Meadow | DR | 80442 |
| | 36 | Hay Meadow | DR | 80442 |
| | 1008 | Winter Park | DR | 80482 |
| | 78415 | US 40 | HWY | 80482 |
| | 327 | Northwoods | PL | 80482 |
| | 158 | Hay Meadow | DR | 80442 |
| | 168 | Hay Meadow | DR | 80442 |
| | 319 | Northwoods | PL | 80482 |
| | 144 | Ski Idlewild | RD | 80482 |
| | 166 | Hay Meadow | DR | 80442 |
| | 174 | Hay Meadow | DR | 80442 |

| | | | |
|-------|-------------|-----|-------|
| 251 | Diamond | AVE | 80446 |
| 120 | Cattle | DR | 80478 |
| 22 | Stagecoach | WAY | 80442 |
| 16 | Stagecoach | WAY | 80442 |
| 81699 | US 40 | HWY | 80482 |
| 12 | Stage Coach | WAY | 80442 |

45

INSPECTION - Fire Alarm Rough

| | | | |
|-------|--------------|-----|-------|
| 144 | Ski Idlewild | RD | 80482 |
| 0 | GCR 7210 | | 80442 |
| 144 | Ski Idlewild | RD | 80482 |
| 144 | Ski Idlewild | RD | 80482 |
| 1008 | Winter Park | DR | 80482 |
| 116 | Springview | LN | 80442 |
| 78415 | US 40 | HWY | 80482 |
| 1008 | Winter Park | DR | 80482 |
| 377 | Lions Gate | DR | 80482 |
| 1008 | Winter Park | DR | 80482 |
| 101 | Trailhead | CIR | 80482 |
| 144 | Ski Idlewild | RD | 80482 |

12

INSPECTION - Food Truck

| | | | |
|------|-----------|----|-------|
| 1701 | Mary Jane | RD | 80482 |
|------|-----------|----|-------|

1

INSPECTION - General - Occupancy

| | | | |
|---------|------------|------|-------|
| 117 125 | Fraser | AVE | 80442 |
| 120 | Zerex | ST | 80442 |
| 140 | GCR 840 | | 80442 |
| 120 | GCR 840 | | 80442 |
| 180 | GCR 840 | | 80442 |
| 35 | GCR 804 | | 80442 |
| 72275 | US 40 | HWY | 80478 |
| 541 | Zerex | ST | 80442 |
| 100 | GCR 515 | | 80478 |
| 78737 | US 40 | HWY | 80482 |
| 78737 | US 40 | HWY | 80482 |
| 107 | Eisenhower | DR | 80442 |
| 153 | Fraser | AVE | 80442 |
| 160 | GCR 840 | | 80442 |
| 78656 | US 40 | HWY | 80482 |
| 70 | GCR 820 | | 80478 |
| 72287 | US 40 | HWY | 80478 |
| 60 | GCR 820 | | 80478 |
| 100B | Meadow | BLVD | 80478 |
| 78737 | US 40 | HWY | 80482 |
| 78737 | US 40 | HWY | 80482 |
| 78737 | US 40 | HWY | 80482 |
| 22 | Second | ST | 80442 |
| 283 | Sunspot | WAY | 80482 |
| 160 | Sunspot | WAY | 80482 |
| 5405 | Parsenn | RD | 80482 |
| 5835 | Parsenn | RD | 80482 |

| | | | |
|-------|---------------|-----|-------|
| 909 | Mary Jane | RD | 80482 |
| 156 | Mid Mountain | WAY | 80482 |
| 1701 | Mary Jane | RD | 80482 |
| 1101 | GCR 53 | | 80478 |
| 210 | Alpenglow | WAY | 80482 |
| 425 | GCR 5001 | | 80482 |
| 78737 | US 40 | HWY | 80482 |
| 89 | Parsenn | RD | 80482 |
| 145 | Parsenn | RD | 80482 |
| 222 | Sunspot | WAY | 80482 |
| 85 | Parsenn | RD | 80482 |
| 3853 | Parsenn | RD | 80482 |
| 244 | Mid Mountain | WAY | 80482 |
| 911 | Mary Jane | RD | 80482 |
| 1049 | Mary Jane | RD | 80482 |
| 150 | Alpenglow | WAY | 80482 |
| 78737 | US 40 | HWY | 80482 |
| 401 | Zerex | ST | 80442 |
| 78821 | US 40 | HWY | 80482 |
| 125 | Parry Peak | WAY | 80482 |
| 125 | Parry Peak | WAY | 80482 |
| 135 | Parry Peak | WAY | 80482 |
| 110 | Parry Peak | WAY | 80482 |
| 115 | Parry Peak | WAY | 80482 |
| 300 | Eisenhower | | 80442 |
| 300 | Eisenhower | | 80442 |
| 801 | Trailhead | CIR | 80482 |
| 6827 | GCR 51 | | 80478 |
| 300 | Eisenhower | | 80442 |
| 85 | Parsenn | RD | 80482 |
| 105 | Parry Peak | WAY | 80482 |
| 105 | Parry Peak | WAY | 80482 |
| 125 | Parry Peak | WAY | 80482 |
| 78415 | US 40 | HWY | 80482 |
| 100 | Winter Park | DR | 80482 |
| 105 | Parry Peak | WAY | 80482 |
| 145 | Parsenn | RD | 80482 |
| 105 | Parry Peak | WAY | 80482 |
| 78199 | US 40 | HWY | 80482 |
| 78336 | US 40 | HWY | 80482 |
| 78850 | US 40 | HWY | 80482 |
| 670 | Winter Park | DR | 80482 |
| 687 | GCR 517 | | 80482 |
| 503 | Zerex | ST | 80442 |
| 78941 | US 40 | HWY | 80482 |
| 147 | Forest | TRL | 80482 |
| 319 | Little Pierre | AVE | 80442 |
| 401 | Trailhead | CIR | 80482 |
| 601 | Trailhead | CIR | 80482 |
| 701 | Trailhead | CIR | 80482 |
| 201 | Trailhead | CIR | 80482 |
| 101 | Trailhead | CIR | 80482 |

| | | | |
|-------|--------------|-----|-------|
| 3000 | GCR 517 | | 80442 |
| 78737 | US 40 | HWY | 80482 |
| 1241 | GCR 72 | | 80442 |
| 33 | Parsenn | RD | 80482 |
| 93 | Cooper Creek | WAY | 80482 |
| 120 | Parry Peak | WAY | 80482 |
| 125 | Parry Peak | WAY | 80482 |
| 130 | Parry Peak | WAY | 80482 |
| 501 | Trailhead | CIR | 80482 |
| 901 | Trailhead | CIR | 80482 |
| 421 | Norgren | RD | 80442 |
| 78869 | US 40 | HWY | 80482 |
| 78491 | US 40 | HWY | 80482 |
| 415 | GCR 5001 | | 80442 |
| 78260 | US 40 | HWY | 80482 |
| 78737 | US 40 | HWY | 80482 |
| 95 | Vintage Way | ST | 80482 |
| 301 | Trailhead | CIR | 80482 |
| 130 | Parry Peak | WAY | 80482 |
| 115 | Parry Peak | WAY | 80482 |
| 115 | Parry Peak | WAY | 80482 |
| 110 | Bridgers | TRL | 80482 |
| 1930 | Mary Jane | RD | 80482 |
| 125 | Parry Peak | WAY | 80482 |
| 115 | Parry Peak | WAY | 80482 |
| 310 | Iron Horse | WAY | 80482 |
| 1 | Main | ST | 80442 |
| 421 | Norgren | RD | 80442 |
| 220 | GCR 522 | | 80442 |
| 580 | Winter Park | DR | 80482 |
| 115 | Parry Peak | WAY | 80482 |
| 115 | Parry Peak | WAY | 80482 |
| 115 | Parry Peak | WAY | 80482 |
| 310 | Iron Horse | WAY | 80482 |
| 101 | Iron Horse | WAY | 80482 |
| 6827 | GCR 51 | | 80478 |
| 78259 | US 40 | HWY | 80482 |
| 670 | Winter Park | DR | 80482 |

117

INSPECTION - General - Property/Buildi

| | | | |
|-------|------------|-----|-------|
| 6827 | GCR 51 | | 80478 |
| 6827 | GCR 51 | | 80478 |
| 79050 | US 40 | HWY | 80482 |
| 79050 | US 40 | HWY | 80482 |
| 125 | Eastom | AVE | 80442 |
| 220 | GCR 522 | | 80442 |
| 218 | Eisenhower | DR | 80442 |
| 218 | Eisenhower | DR | 80442 |

8

INSPECTION - Hood System

| | | | |
|-------|---------|-----|-------|
| 72287 | US 40 | HWY | 80478 |
| 145 | Parsenn | RD | 80482 |

| | | | |
|-------|--------------|-----|-------|
| 160 | Sunspot | WAY | 80482 |
| 156 | Mid Mountain | WAY | 80482 |
| 5835 | Parsenn | RD | 80482 |
| 1701 | Mary Jane | RD | 80482 |
| 415 | GCR 5001 | | 80442 |
| 425 | GCR 5001 | | 80482 |
| 120 | Parry Peak | WAY | 80482 |
| 100 | Winter Park | DR | 80482 |
| 89 | Parsenn | RD | 80482 |
| 125 | Parry Peak | WAY | 80482 |
| 125 | Parry Peak | WAY | 80482 |
| 6827 | GCR 51 | | 80478 |
| 135 | Parry Peak | WAY | 80482 |
| 130 | Parry Peak | WAY | 80482 |
| 503 | Zerex | ST | 80442 |
| 78941 | US 40 | HWY | 80482 |
| 78850 | US 40 | HWY | 80482 |
| 40 | GCR 804 | | 80442 |
| 110 | Parry Peak | WAY | 80482 |
| 78199 | US 40 | HWY | 80482 |
| 1008 | Winter Park | DR | 80482 |
| 78336 | US 40 | HWY | 80482 |
| 3000 | GCR 517 | | 80442 |
| 78415 | US 40 | HWY | 80482 |
| 78260 | US 40 | HWY | 80482 |
| 1930 | Mary Jane | RD | 80482 |

28

INSPECTION - Hydro

| | | | |
|------|----------------|----|-------|
| 460 | Kings Crossing | RD | 80482 |
| 460 | Kings Crossing | RD | 80482 |
| 116 | Springview | LN | 80442 |
| 144 | Ski Idlewild | RD | 80482 |
| 144 | Ski Idlewild | RD | 80482 |
| 144 | Ski Idlewild | RD | 80482 |
| 144 | Ski Idlewild | RD | 80482 |
| 1410 | GCR 5 | | 80442 |
| 1008 | Winter Park | DR | 80482 |
| 144 | Ski Idlewild | RD | 80482 |

10

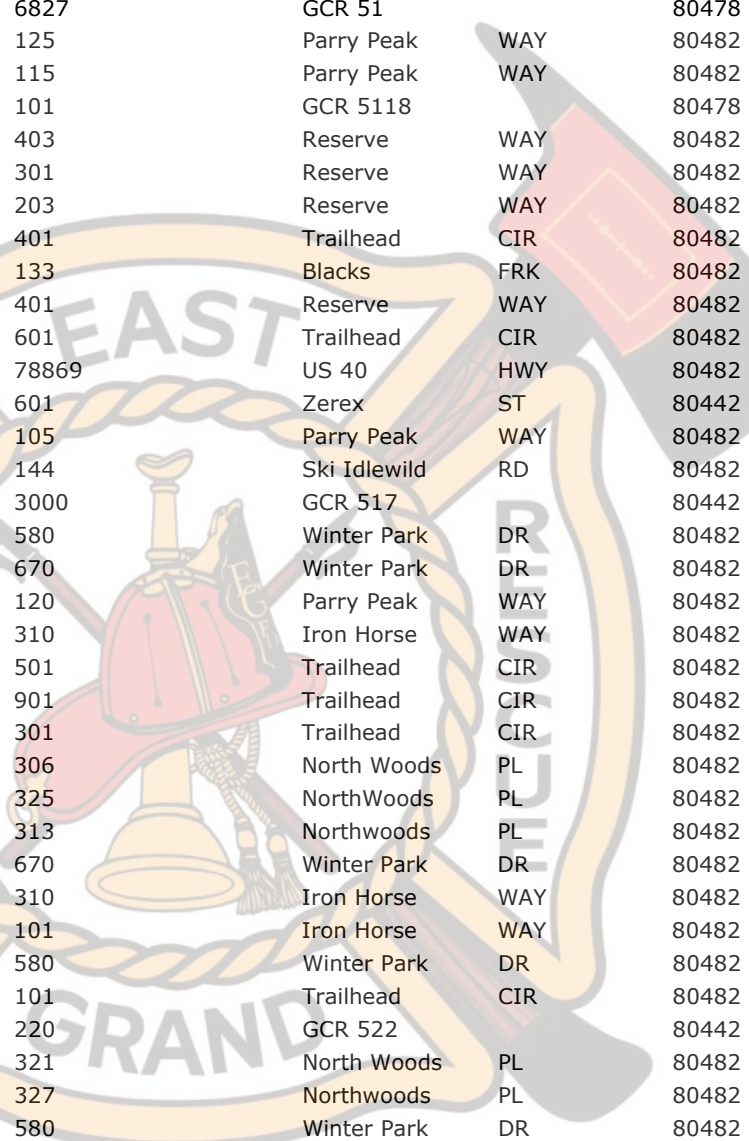
INSPECTION - Special

| | | | |
|----|---------|----|-------|
| 89 | Parsenn | RD | 80482 |
|----|---------|----|-------|

1

INSPECTION - Special KNOX

| | | | |
|-----|--------------|-----|-------|
| 751 | Zerex | ST | 80442 |
| 670 | Winter Park | DR | 80482 |
| 144 | Ski Idlewild | RD | 80482 |
| 580 | Winter Park | DR | 80482 |
| 1 | Main | ST | 80442 |
| 100 | Winter Park | DR | 80482 |
| 701 | Trailhead | CIR | 80482 |
| 201 | Trailhead | CIR | 80482 |
| 135 | Parry Peak | WAY | 80482 |




| | | | |
|-------|--------------|-----|-------|
| 130 | Parry Peak | WAY | 80482 |
| 110 | Parry Peak | WAY | 80482 |
| 670 | Winter Park | DR | 80482 |
| 78727 | US 40 | HWY | 80482 |
| 801 | Trailhead | CIR | 80482 |
| 377 | Lions Gate | DR | 80482 |
| 6827 | GCR 51 | | 80478 |
| 125 | Parry Peak | WAY | 80482 |
| 115 | Parry Peak | WAY | 80482 |
| 101 | GCR 5118 | | 80478 |
| 403 | Reserve | WAY | 80482 |
| 301 | Reserve | WAY | 80482 |
| 203 | Reserve | WAY | 80482 |
| 401 | Trailhead | CIR | 80482 |
| 133 | Blacks | FRK | 80482 |
| 401 | Reserve | WAY | 80482 |
| 601 | Trailhead | CIR | 80482 |
| 78869 | US 40 | HWY | 80482 |
| 601 | Zerex | ST | 80442 |
| 105 | Parry Peak | WAY | 80482 |
| 144 | Ski Idlewild | RD | 80482 |
| 3000 | GCR 517 | | 80442 |
| 580 | Winter Park | DR | 80482 |
| 670 | Winter Park | DR | 80482 |
| 120 | Parry Peak | WAY | 80482 |
| 310 | Iron Horse | WAY | 80482 |
| 501 | Trailhead | CIR | 80482 |
| 901 | Trailhead | CIR | 80482 |
| 301 | Trailhead | CIR | 80482 |
| 306 | North Woods | PL | 80482 |
| 325 | North Woods | PL | 80482 |
| 313 | Northwoods | PL | 80482 |
| 670 | Winter Park | DR | 80482 |
| 310 | Iron Horse | WAY | 80482 |
| 101 | Iron Horse | WAY | 80482 |
| 580 | Winter Park | DR | 80482 |
| 101 | Trailhead | CIR | 80482 |
| 220 | GCR 522 | | 80442 |
| 321 | North Woods | PL | 80482 |
| 327 | Northwoods | PL | 80482 |
| 580 | Winter Park | DR | 80482 |
| 315 | Northwoods | PL | 80482 |
| 303 | Reserve | WAY | 80482 |
| 319 | Northwoods | PL | 80482 |
| 308 | Northwoods | PL | 80482 |

54

INSPECTION - Sprinkler System Final

| | | | |
|-----|--------------|----|-------|
| 85 | Parsenn | RD | 80482 |
| 138 | Hay Meadow | DR | 80442 |
| 901 | GCR 5142 | | 80478 |
| 101 | GCR 5142 | | 80478 |
| 144 | Ski Idlewild | RD | 80482 |



| | | | |
|-------|--------------|-----|-------|
| 321 | North Woods | PL | 80482 |
| 105 | GCR 5142 | | 80478 |
| 122 | Hay Meadow | DR | 80442 |
| 86 | Hay Meadow | DR | 80442 |
| 96 | Hay Meadow | DR | 80442 |
| 377 | Lions Gate | DR | 80482 |
| 103 | GCR 5142 | | 80478 |
| 144 | Ski Idlewild | RD | 80482 |
| 120 | Cattle | DR | 80478 |
| 90 | Hay Meadow | DR | 80442 |
| 80 | Hay Meadow | DR | 80442 |
| 148 | Hay Meadow | DR | 80442 |
| 166 | Hay Meadow | DR | 80442 |
| 158 | Hay Meadow | DR | 80442 |
| 54 | Hay Meadow | DR | 80442 |
| 64 | Hay Meadow | DR | 80442 |
| 66 | Hay Meadow | DR | 80442 |
| 16 | Stagecoach | WAY | 80442 |
| 30 | Hay Meadow | DR | 80442 |
| 62 | Hay Meadow | DR | 80442 |
| 12 | Stage Coach | WAY | 80442 |
| 319 | Northwoods | PL | 80482 |
| 1008 | Winter Park | DR | 80482 |
| 174 | Hay Meadow | DR | 80442 |
| 1008 | Winter Park | DR | 80482 |
| 1008 | Winter Park | DR | 80482 |
| 1008 | Winter Park | DR | 80482 |
| 168 | Hay Meadow | DR | 80442 |
| 615 | Cozens | RDG | 80442 |
| 78415 | US 40 | HWY | 80482 |
| 327 | Northwoods | PL | 80482 |
| 118 | Hay Meadow | DR | 80442 |
| 114 | Hay Meadow | DR | 80442 |
| 108 | Hay Meadow | DR | 80442 |
| 158 | Hay Meadow | DR | 80442 |
| 78415 | US 40 | HWY | 80482 |
| 148 | Game | TRL | 80442 |
| 47 | Cooper Creek | WAY | 80482 |
| 138 | Game | TRL | 80442 |
| 216 | Game | TRL | 80442 |
| 38 | Hay Meadow | DR | 80442 |
| 36 | Hay Meadow | DR | 80442 |
| 216 | Game | TRL | 80442 |
| 308 | Northwoods | PL | 80482 |
| 22 | Stagecoach | WAY | 80442 |
| 42 | Hay Meadow | DR | 80442 |
| 81699 | US 40 | HWY | 80482 |

52

INSPECTION - Sprinkler System Rough

| | | | |
|-----|-----------------|-----|-------|
| 75 | River Run | CIR | 80442 |
| 81 | Trails Crossing | | 80442 |
| 401 | Meadow Mile | | 80442 |



| | | | |
|-------|----------------|-----|-------|
| 421 | Meadow Mile | | 80442 |
| 105 | GCR 5142 | | 80478 |
| 101 | GCR 5142 | | 80478 |
| 85 | Parsenn | RD | 80482 |
| 75 | River Run | CIR | 80442 |
| 75 | River Run | CIR | 80442 |
| 0 | GCR 7210 | | 80442 |
| 103 | GCR 5142 | | 80478 |
| 460 | Kings Crossing | RD | 80482 |
| 503 | Reserve | WAY | 80442 |
| 116 | Springview | LN | 80442 |
| 0 | Iron Horse | WAY | 80482 |
| 501 | Reserve | WAY | 80442 |
| 903 | GCR 5142 | | 80478 |
| 725 | CR 40 | RD | 80446 |
| 905 | GCR 5142 | | 80478 |
| 132 | Hay Meadow | DR | 80442 |
| 144 | Ski Idlewild | RD | 80482 |
| 0 | Iron Horse | WAY | 80482 |
| 101 | Trailhead | CIR | 80482 |
| 79050 | US 40 | HWY | 80482 |
| 144 | Ski Idlewild | RD | 80482 |
| 142 | Hay Meadow | DR | 80442 |
| 615 | Cozens | RDG | 80442 |
| 100 | Alpenglow | VIS | 80478 |
| 205 | Lakota Park | DR | 80482 |
| 361 | Meadow Mile | | 80442 |
| 381 | Meadow Mile | | 80442 |
| 687 | GCR 517 | | 80482 |
| 207 | Lakota Park | DR | 80482 |
| 56 | Moffat | WAY | 80442 |
| 341 | Meadow Mile | | 80442 |
| 460 | Kings Crossing | RD | 80482 |
| 1008 | Winter Park | DR | 80482 |
| 327 | Northwoods | PL | 80482 |
| 104 | GCR 80316 | | 80442 |
| 108 | Hay Meadow | DR | 80442 |
| 118 | Hay Meadow | DR | 80442 |
| 377 | Lions Gate | DR | 80482 |
| 114 | Hay Meadow | DR | 80442 |
| 901 | GCR 5142 | | 80478 |
| 325 | NorthWoods | PL | 80482 |
| 0 | Iron Horse | WAY | 80482 |
| 148 | Hay Meadow | DR | 80442 |
| 138 | Hay Meadow | DR | 80442 |
| 168 | Hay Meadow | DR | 80442 |
| 1008 | Winter Park | DR | 80482 |
| 166 | Hay Meadow | DR | 80442 |
| 725 | CR 40 | RD | 80446 |
| 321 | North Woods | PL | 80482 |
| 78415 | US 40 | HWY | 80482 |
| 174 | Hay Meadow | DR | 80442 |

| | | | |
|-------|--------------|-----|-------|
| 158 | Hay Meadow | DR | 80442 |
| 78415 | US 40 | HWY | 80482 |
| 319 | Northwoods | PL | 80482 |
| 230 | Game | TRL | 80442 |
| 144 | Ski Idlewild | RD | 80482 |
| 122 | Hay Meadow | DR | 80442 |

61

INSPECTION - State / School

| | | | |
|-----|---------|-----|-------|
| 1 | Main | ST | 80442 |
| 33 | Parsenn | RD | 80482 |
| 125 | Eastom | AVE | 80442 |
| 150 | Eastom | AVE | 80442 |
| 505 | Willow | | 80442 |
| 125 | Eastom | AVE | 80442 |
| 505 | Willow | | 80442 |

7

Meet with Government Officials

| | | | |
|-----|--------------|--|-------|
| 150 | Whistle Stop | | 80482 |
| 85 | GCR 5301 | | 80478 |

2

Meeting w/ Owner or Rep

| | | | |
|-------|--------------|-----|-------|
| 47 | Cooper Creek | WAY | 80482 |
| 37 | Cooper Creek | WAY | 80482 |
| 47 | Cooper Creek | WAY | 80482 |
| 79050 | US 40 | HWY | 80482 |
| 330 | Park | AVE | 80442 |

5

PLAN REVIEW - Development

| | | | |
|-------|--------------|-----|-------|
| 79303 | US 40 | HWY | 80482 |
| 79303 | US 40 | HWY | 80482 |
| 0 | GCR 721 | | 80442 |
| 79303 | US 40 | HWY | 80482 |
| 1 | Winter Park | DR | 80482 |
| 1 | Ski Idlewild | RD | 80482 |
| 47 | Cooper Creek | WAY | 80482 |
| 0 | GCR 721 | | 80442 |
| 406 | Zerex | ST | 80442 |
| 47 | Cooper Creek | WAY | 80482 |
| 0 | Ski Idlewild | RD | 80482 |
| 0 | Ski Idlewild | RD | 80482 |
| 730 | Baker | DR | 80482 |
| 0 | John's | DR | 80442 |
| 31 | Telemark | DR | 80442 |
| 461 | Muse | DR | 80442 |
| 461 | Muse | DR | 80442 |
| 79303 | US 40 | HWY | 80482 |
| 0 | John's | DR | 80442 |
| 31 | Telemark | DR | 80442 |
| 406 | Zerex | ST | 80442 |
| 416 | Doc Susie | | 80442 |
| 25 | Wanders | WAY | 80482 |
| plat | Coyote Creek | | 80478 |

| | | | |
|-----|---------|-----|-------|
| 0 | John's | DR | 80442 |
| 798 | Cranmer | AVE | 80442 |

26

PLAN REVIEW - Fire Alarm

| | | | |
|------|----------------|-----|-------|
| 1410 | GCR 5 | | 80442 |
| 460 | Kings Crossing | RD | 80482 |
| 1101 | GCR 53 | | 80478 |
| 401 | Meadow Mile | | 80442 |
| 0 | Iron Horse | WAY | 80482 |
| 321 | Meadow Mile | | 80442 |
| 281 | Meadow Mile | | 80442 |
| 421 | Meadow Mile | | 80442 |
| 381 | Meadow Mile | | 80442 |
| 341 | Meadow Mile | | 80442 |
| 301 | Meadow Mile | | 80442 |
| 261 | Meadow Mile | | 80442 |
| 361 | Meadow Mile | | 80442 |
| 251 | Diamond | AVE | 80446 |
| 460 | Kings Crossing | RD | 80482 |
| 1930 | Mary Jane | RD | 80482 |

16

PLAN REVIEW - General

| | | | |
|-----|-------|-----|-------|
| 202 | Topaz | AVE | 80446 |
|-----|-------|-----|-------|

1

PLAN REVIEW - Hood System

| | | | |
|------|-------------|----|-------|
| 1008 | Winter Park | DR | 80482 |
|------|-------------|----|-------|

1

PLAN REVIEW - Solar Panel

| | | | |
|-----|---------|-----|-------|
| 409 | Lealand | CIR | 80482 |
|-----|---------|-----|-------|

1

PLAN REVIEW - Sprinkler System

| | | | |
|-------|-----------------|-----|-------|
| 1101 | GCR 53 | | 80478 |
| 687 | GCR 517 | | 80482 |
| 75 | River Run | CIR | 80442 |
| 100 | Alpenglow | VIS | 80478 |
| 55 | River Run | CIR | 80442 |
| 144 | Ski Idlewild | RD | 80482 |
| 701 | GCR 5142 | | 80478 |
| 55 | River Run | CIR | 80442 |
| 75 | River Run | CIR | 80442 |
| 460 | Kings Crossing | RD | 80482 |
| 0 | GCR 7210 | | 80442 |
| 421 | Meadow Mile | | 80442 |
| 261 | Meadow Mile | | 80442 |
| 281 | Meadow Mile | | 80442 |
| 321 | Meadow Mile | | 80442 |
| 81 | Trails Crossing | | 80442 |
| 78436 | US 40 | HWY | 80482 |
| 0 | GCR 7210 | | 80442 |
| 381 | Meadow Mile | | 80442 |
| 301 | Meadow Mile | | 80442 |
| 0 | GCR 7210 | | 80442 |

| | | | |
|--------------------------|----------------|-----|-------|
| 110 | Cattle | DR | 80478 |
| 106 | Sky Valley | WAY | 80478 |
| 47 | Cooper Creek | WAY | 80482 |
| 911 | Mary Jane | RD | 80482 |
| 505 | GCR 5142 | | 80478 |
| 327 | Northwoods | PL | 80482 |
| 75 | River Run | CIR | 80442 |
| 703 | GCR 5142 | | 80478 |
| 325 | NorthWoods | PL | 80482 |
| 501 | GCR 5142 | | 80478 |
| 503 | GCR 5142 | | 80478 |
| 705 | GCR 5142 | | 80478 |
| 104 | GCR 80316 | | 80442 |
| 144 | Ski Idlewild | RD | 80482 |
| 361 | Meadow Mile | | 80442 |
| 401 | Meadow Mile | | 80442 |
| 230 | Game | TRL | 80442 |
| 341 | Meadow MIlle | | 80442 |
| 0 | Iron Horse | WAY | 80482 |
| 55 | River Run | CIR | 80442 |
| 41 | | | |
| remodels / tenant finish | | | |
| 78491 | US 40 | HWY | 80482 |
| 1 | | | |
| Short Term Rental (STR) | | | |
| 319 | Little Pierre | AVE | 80442 |
| 1 | | | |
| Tent | | | |
| 85 | Parssen | RD | 80482 |
| 78821 | US 40 | HWY | 80482 |
| 2 | | | |
| Water Service Flush | | | |
| 78415 | US 40 | HWY | 80482 |
| 1 | | | |
| Wildfire Hazard | | | |
| 1023 | Elkdale | DR | 80478 |
| 1692 | Tabernash | DR | 80478 |
| 240 | Vasquez | RD | 80482 |
| 406 | Tabernash | DR | 80478 |
| 4499 | GCR 8 | | 80442 |
| 1640 | GCR 834 | | 80442 |
| 62 | Viking | DR | 80482 |
| 30 | Viking | DR | 80482 |
| 269 | GCR 509 | | 80442 |
| 100 | GCR 515 | | 80478 |
| 78 | Viking | DR | 80482 |
| 46 | Viking | DR | 80482 |
| 285 | Kings Crossing | RD | 80482 |
| 510 | GCR 8411 | | 80478 |
| 220 | GCR 5191 | | 80478 |
| 164 | GCR 509 | | 80442 |
| 16 | GCR 831 | | 80442 |

968
1076
115
225

GCR 5171
GCR 5171
GCR 5191
Quill

CT

80478
80478
80478
80442





“The East Grand County Fire Protection District #4 is dedicated to the preservation and protection of life and property of the residents and visitors to the Fraser Valley by providing our Volunteer Firefighters with quality training, a strong Fire Prevention Program and up to date apparatus and equipment.”

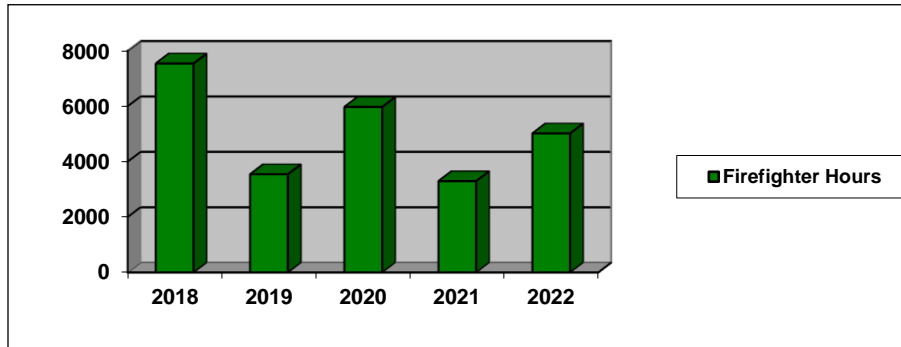
**Auto/Mutual Aid Agreements
Intergovernmental Agreements
Fire Code Enforcement
For
East Grand County Fire Protection District #4**

- Auto Aid Agreement – Grand Fire Protection District #1
- Mutual Aid Agreement – All Grand County Fire Protection Districts
- Mutual Aid Agreement – Clear Creek County Emergency Service District
- Mutual Aid Agreement – Mountain Area Mutual Aid -Northwest Colorado, I 70 Corridor
- Division of Fire Protection and Control Wildfire Immediate Needs (WIN) program
- Intergovernmental Agreement – Grand County Headwaters Water Rescue Authority
- Intergovernmental Agreement – Grand County Emergency Telephone Service Authority (911)
- Intergovernmental Agreement - Grand County Dispatch Center
- Intergovernmental Agreement – Impact Fee, Town of Winter Park
- Intergovernmental Agreement – Impact Fee, Town of Fraser
- Intergovernmental Agreement – Impact Fee, Grand County
- Intergovernmental Agreement – Snake River Fleet Maintenance Services
- Fire Code Enforcement – Town of Winter Park
- Fire Code Enforcement – Town of Fraser
- Fire Code Enforcement – Grand County
- Grand County Fire Districts - Inspections Fire Safety Systems
- Colorado Division of Fire Prevention and Control – School Inspections



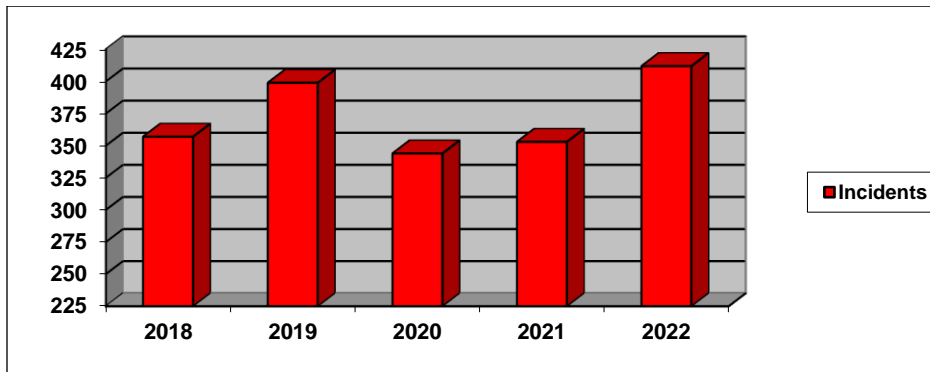
The Agreements referenced remain in force unless cancellation is received in writing.

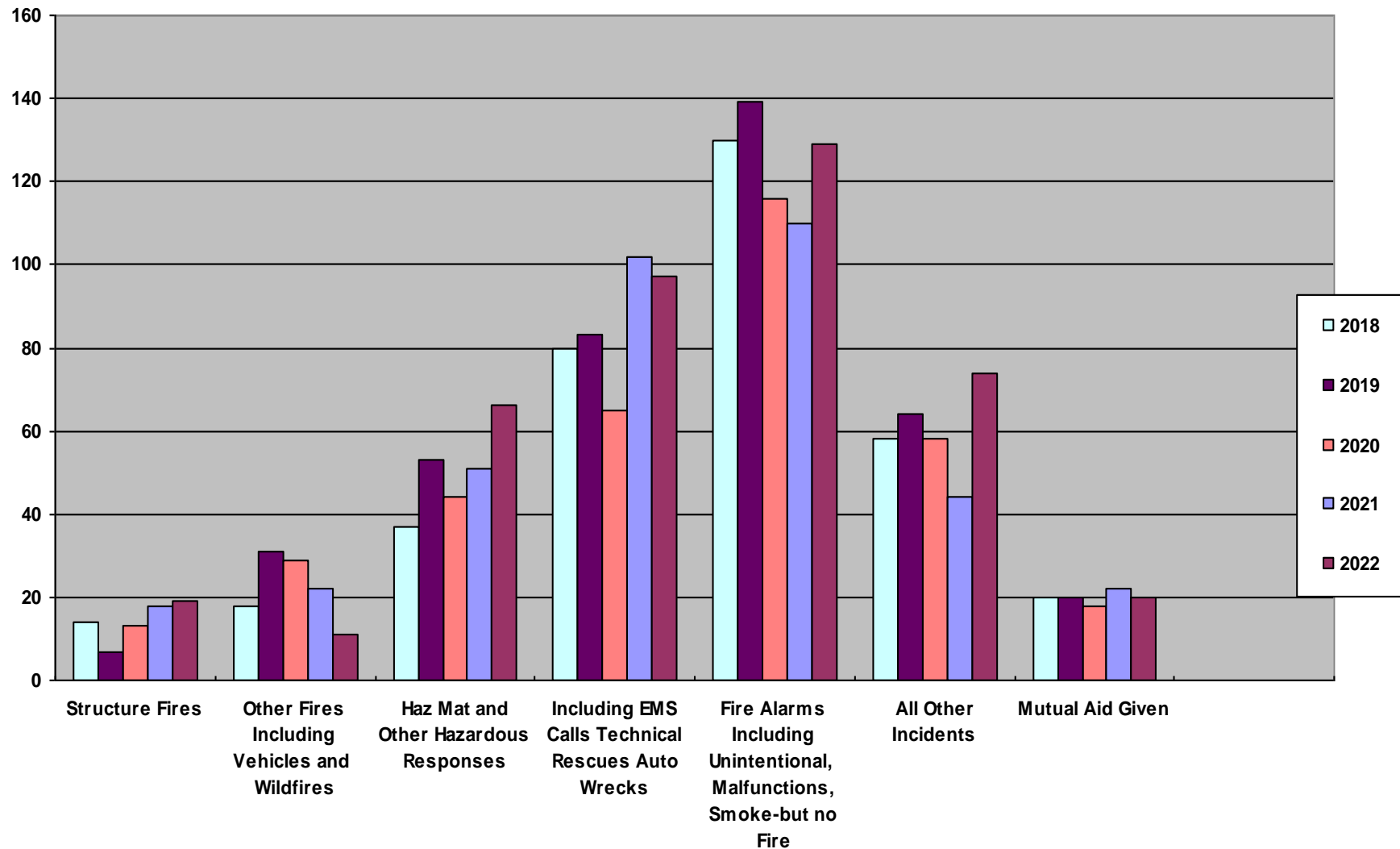
Incident Information 2018 to 2022



The charts indicate the number of incidents and the total hours provided by the Firefighters and Officers of the District. In 2022 we broke 400 calls for the year- 412 total with 5,019 hours provided. For 2021 calls went up to 353 incidents and 3,296 hours of service time provided. In 2020 – 344 calls and 5,974 hours due to major incidents, Braidwood Fatality Fire and East Troublesome Blowup Wildfire. So even though call numbers decreased 14% during the Year of COVID 19 hours increased 42%. For 2019 - 399 calls and 3,545 hours. 2018 - 357 calls and 7,542 hours due to extended wildfire incidents.

From 2002 to 2012 calls went from 116 to 229, a 97% increase. From 2012 to 2022 the District had an 80% increase going from 229 to 412 calls.

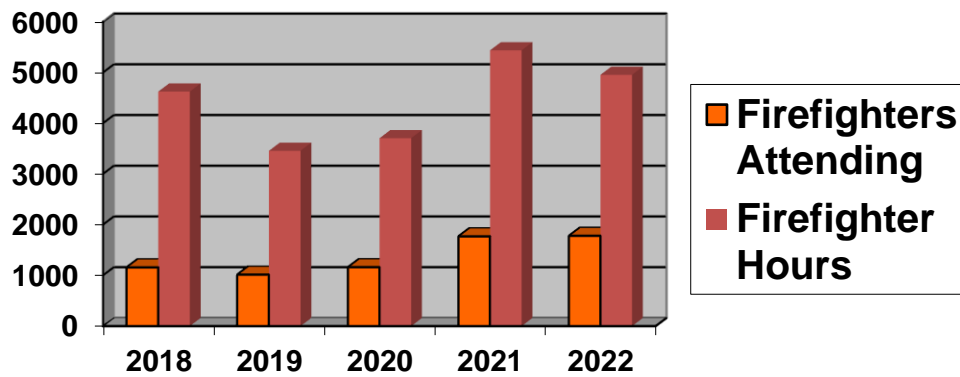




2018 to 2022 NFPA Fire Experience

This chart is a breakdown of incidents and responses by year and type of call for the East Grand Fire District. The collecting of information is based on the National Fire Incident Reporting System (NFIRS) and National Fire Protection Association (NFPA) guidelines. We submit this information to the NFPA and to the Colorado Division of Fire Prevention and Control to provide vital information on our operations and to help identify trends throughout the US Fire Service.

This chart shows total number and the total hours of training by Firefighters and Officers over the last five years.



We provided 4 or more training nights a month in 2022. These included specialized classes for pump operator, auto extrication, medical, and rope uphauling. In 2022 Firefighters and Officers attended 1,780 trainings (one Firefighter attending one class) and 4,954 hours of instruction. For 2021 1,769 trainings and 5,437 hours. In 2020 1,161 trainings 3,705 hours. 2019 had 1,014 trainings and 3,455 hours. In 2018 Firefighters attended 1,158 trainings and contributing 4,624 hours.



2022 had a lot going on with Short Term Rentals issues, Affordable Housing concerns, and the new Headwaters Rescue Authority between the County and Fire Districts working to implement operations including the underwater ROV. The changeover of our Records Management System (RMS) from Firehouse to ESO continued. We will work on improving the new RMS to better reflect what our volunteers and staff contribute such as the 21,315 hours of shift coverage over 3,552 shifts, their involvement in public education, District social activities with families and friends, special projects, pump and hose testing, ladder testing, meetings - still ZOOMing!, inspections and planning. The drop from 2020 to 2021 reflects accounting for the Fire Prevention Bureau separately.

